

# DIAMOND<sup>®</sup> 9D

## RETAINING WALL

A LIGHTWEIGHT SOLUTION FOR SEGMENTAL RETAINING WALLS WITH A WEATHERED STONE LOOK







# DIAMOND<sup>®</sup> 9D

## RETAINING WALL

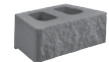
A LIGHTWEIGHT SOLUTION FOR SEGMENTAL RETAINING WALLS WITH A WEATHERED STONE LOOK

### ✔ FEATURES & BENEFITS

- All system components are standard-split in-line
- Rear lip locators easily establish a uniform wall batter
- A matching cap completes the system
- Build gravity walls up to 3 feet high\*, including the buried course.
- Taller walls can be built using geosynthetic reinforcement when designed by a qualified engineer.
- Minimum outside radius, measured on the top course to the front of the units: 3 feet
- Minimum inside radius, measured on the base course to the front of the units: 6 feet
- The rear lip establishes a 1 1/8" setback for a 10.6 degree system batter

### 🧱 SHAPES & SIZES

#### STRAIGHT FACE



6 x 17 3/4 x 9

#### VIRTUAL JOINT



6 x 17 3/4 x 12

#### CAP



3 x 17 1/4 / 10 5/8 x 9

#### CORNER



6 x 18 x 9

### 🔥 AVAILABLE COLORS



BRITTANY BEIGE



OXFORD



VANILLA BEIGE

**BELGARD<sup>®</sup>** | PAVES THE WAY

For more info, visit [Belgard.com](http://Belgard.com)

**ASHGROVE**  
4201 Powell Drive  
Bonner Springs, KS 66012  
Ph: 913-667-1792



© 2023 Oldcastle<sup>®</sup> APG, Inc. A CRH Company. All Rights Reserved.  
Revised: 04/04/23 BEL22-412\_Ashgrove