

# DIAMOND<sup>®</sup> 9D

## RETAINING WALL

A LIGHTWEIGHT SOLUTION FOR SEGMENTAL RETAINING WALLS WITH A WEATHERED STONE LOOK



**BELGARD**  
PAVES THE WAY<sup>™</sup>



DEVELOPED BY  
**ANCHOR**  
DIAMOND  
WALL INDUSTRY EXPERTS







# DIAMOND<sup>®</sup> 9D

## RETAINING WALL

A LIGHTWEIGHT SOLUTION FOR SEGMENTAL RETAINING WALLS WITH A WEATHERED STONE LOOK

### ✔ FEATURES & BENEFITS

- All system components are standard-split in-line
- Rear lip locators easily establish a uniform wall batter
- A matching cap completes the system
- Build gravity walls up to 3 feet high\*, including the buried course.
- Taller walls can be built using geosynthetic reinforcement when designed by a qualified engineer.
- Minimum outside radius, measured on the top course to the front of the units: 3 feet
- Minimum inside radius, measured on the base course to the front of the units: 6 feet
- The rear lip establishes a 1 1/8" setback for a 10.6 degree system batter

### 🔹 AVAILABLE COLORS



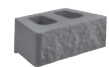
BELLA BLEND



SABLE BLEND

### 🧱 SHAPES & SIZES

#### STRAIGHT FACE



6 x 17 3/4 x 9

#### CAP



3 x 17 1/4 / 10 5/8 x 9

#### CORNER



6 x 18 x 9

**BELGARD<sup>®</sup>** | PAVES THE WAY

For more info, visit [Belgard.com](http://Belgard.com)

**ANCHOR**  
975 Burnt Tavern Road  
Brick, NJ 08724  
Ph: 1-800-682-5625



© 2023 Oldcastle<sup>®</sup> APG, Inc., A CRH Company. All Rights Reserved.  
Revised: 04/05/23 BEL22-412\_Anchor