

AQUALINE™

PERMEABLE PAVER

LOW MAINTENANCE AND PROVEN DURABILITY
IN A CONTEMPORARY 3-PIECE SYSTEM



BELGARD
PAVES THE WAY™





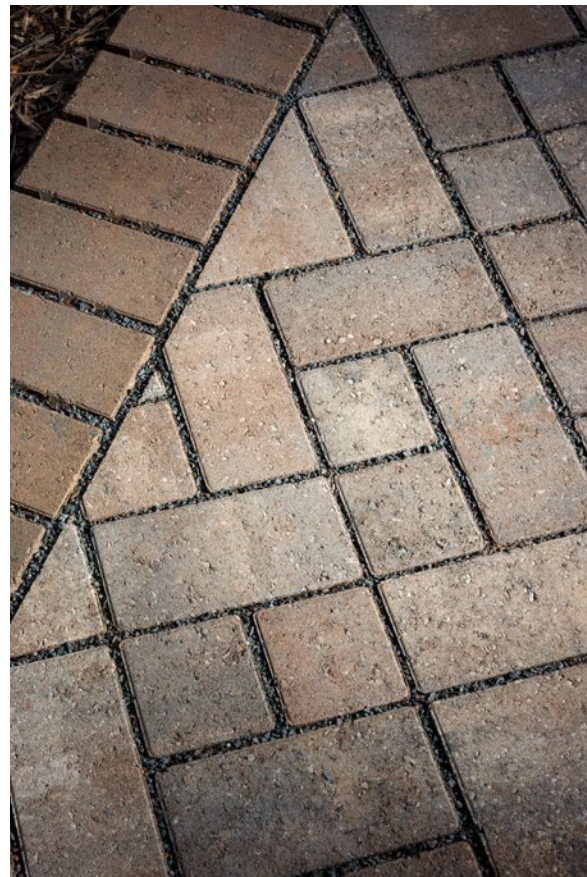
AQUALINE™

PERMEABLE PAVER

LOW MAINTENANCE AND PROVEN DURABILITY IN A CONTEMPORARY 3-PIECE SYSTEM

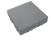
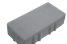

📍 FEATURES & BENEFITS

- Interlocking spacer bars for increased structural performance
- Smooth surface with a micro-chamfer to minimize vibration and enhance wheelchair comfort
- Can be utilized to construct an ADA-compliant pavement
- True installed dimensions for design optimization
- Optimal joint openings for infiltration and maintenance
- Can eliminate stormwater runoff and improve water quality
- Meets the requirements of ASTM C936
- Chamfer Width: 3 mm
- Spacer Bar Width: 10 mm
- Surface Infiltration Rate: > 500 inches per hour (varies based on joint infill gradation)
- Surface Open Area: 12%
- Can be installed mechanically




📦 SHAPES & SIZES

3-PIECE AQUALINE

-  4½ x 4½ x 3⅞
-  4½ x 9 x 3⅞
-  9 x 9 x 3⅞

4½ X 9 AQUALINE

-  4½ x 9 x 3⅞

Check with your local Belgard Representative for product availability and color options.

BELGARD® | PAVES THE WAY

For more info, visit Belgard.com

Oldcastle APG - A CRH Company
400 Perimeter Center Terrace, Ste. 1000
Atlanta, GA 30346
Ph: (678) 461-2838



© 2023 Oldcastle® APG, Inc., A CRH Company. All Rights Reserved.
Revised: 10/26/22 BEL22-412