



BELGARD[®]
PAVES THE WAY

PROJECT GUIDE
YOUR JOURNEY BEGINS HERE



WHY BELGARD®?

WE'LL PAVE THE WAY TOGETHER

We don't just build outdoor spaces – we bring your outdoor vision to life. With creativity and craftsmanship, we work together to create the space you've been dreaming of. Because with Belgard, you get more than just beautiful products, you get a partner to help you every step of the way.

Here are just a few of the reasons why homeowners turn to Belgard to make their outdoor dreams a reality.

#1 HARDSCAPES BRAND IN NORTH AMERICA.

For more than 20 years, Belgard has been the leader in the industry, providing the highest levels of quality and craftsmanship in our products and setting the standard for hardscapes.

[Belgard.com](https://www.belgard.com)

INNOVATION.

With over 20,000 hours each year dedicated to research and development, our products provide the highest level of craftsmanship, set the industry standard for quality and guide industry trends.

[Belgard.com/Inspiration/Trends](https://www.belgard.com/Inspiration/Trends)

PEACE OF MIND.

As the largest provider of hardscape products in North America, we proudly stand behind our products with a lifetime transferable limited warranty.

[Belgard.com/Warranty](https://www.belgard.com/Warranty)



EXPERTISE.

Our network of Belgard Authorized Contractors are Interlocking Concrete Pavement Institute (ICPI) trained to deliver superior craftsmanship.

[Belgard.com/Locator](https://www.belgard.com/Locator)



LOCAL FOOTPRINT.

Backed by a national infrastructure of more than 150 operating locations, every town is our town.



DESIGN TOOLS.

Explore endless design possibilities for your outdoor space with our advanced design tools offering inspiration and practical insights to elevate your outdoor living experience.

[Belgard.com/Design-Options](https://www.belgard.com/Design-Options)

START *your* PROJECT TODAY

It's worthwhile to have as much information as possible before you begin any construction project. With that in mind, this guide is dedicated to helping you make the best decisions and understand what to expect before you get started with your project.

Before you plan the specifics of your project, begin by thinking about how you want to use the space. To help develop your ideas and bring them to life, the Belgard Rooms site offers a new approach to outdoor living design. Focusing on templated plans, Belgard Rooms is structured around how shape, color and texture work together to offer more options and make the planning process easier. Designs are categorized by Belgard Collections and home styles, along with other features, applications, regions and more.

Find your inspiration at [Belgard.com/Rooms](https://www.belgard.com/Rooms)



GATHER YOUR IDEAS

Explore all the possibilities for how you want to use the space. Start with Belgard Rooms as a template to bring your ideal outdoor living space to life.



FROM RENDER *to* REALITY

PROJECT CONSIDERATIONS

▶ UNDERSTAND THE STAGES OF YOUR PROJECT:

Typical project stages include demolition, site preparation, base material installation, bedding sand installation, hardscape installation, polymeric sand installation, paver cleaning and sealing.

▶ HARDSCAPE PROJECT TIMELINES DEPEND ON SEVERAL FACTORS:

Size and scale of the project, permits needed (varies by municipality), approval by community organizations (homeowner associations or architectural review boards), and weather delays.

▶ PLAN, CONTRACT AND SCHEDULE UP FRONT:

Additional features delay schedules and add to the total cost. For larger construction projects phased out over time, plan the entire design before starting, including electrical, plumbing, drainage or landscaping details.

▶ BE A FRIENDLY NEIGHBOR:

Discuss with neighbors any construction phases that might be disruptive.

▶ CHECK PRODUCT AVAILABILITY:

Confirm with your contractor that all items being installed are readily available or match your timeframe.

▶ START WITH THE BACKYARD:

Build your backyard first to avoid damaging your front yard.

▶ CONDUCT A FINAL WALK-THROUGH:

Walk through the finished project with your contractor to ensure the quality of install, confirm you have receipts for materials or labor, then register the warranty.

▶ CONSIDER NEXT STEPS:

Plan ahead to finalize your project and enjoy it for years to come. Consider steps like landscaping and scheduling a contractor to seal the pavers.



TIMELINE

PLANNING THE PROJECT

PHASE 1: 4-6 weeks

- ▶ Consider how you will use the space
- ▶ Identify styles that work with your house and landscape
- ▶ Gather inspiration online
- ▶ Set a budget
- ▶ Research approval requirements for your municipality or HOA

DESIGN YOUR SPACE

PHASE 3: 2-4 weeks

- ▶ Explore local options with both contractors and independent designers
- ▶ Review portfolios and narrow down your selection of designers
- ▶ Meet with your favorites to share your vision and ensure you align on style, personality and logistics
- ▶ Select your designer and schedule time to work together in designing your space
- ▶ Request final renderings and share with your contractor

AFTER INSTALLATION

PHASE 5: 6 weeks-12 months

- ▶ Conduct a final walk-through with your contractor to make sure you're satisfied with the work
- ▶ Determine a timeline to clean and seal the pavers
- ▶ Register your lifetime warranty
Belgard.com/Warranty

SELECTING A CONTRACTOR

PHASE 2: 2-3 weeks

- ▶ Visit Belgard.com to find an authorized contractor in your area
- ▶ Review contractor credentials, portfolio and references
- ▶ Check product availability and confirm it aligns with your timeframe
- ▶ Finalize Contract and Scheduling

INSTALLATION

PHASE 4: 2-12 weeks

- ▶ Installation timing will vary depending on the scope of the project
- ▶ Confirm with your contractor that the correct materials were ordered and arrived
- ▶ Communicate with your contractor throughout the project to ensure it's progressing as planned



DESIGN TIP

Spring and summer are the busiest seasons for contractors. Start planning during the winter, and source your contractor weeks or even months prior to the start of your project.

GET CREATIVE

Outdoor spaces are a haven for both recreation and relaxation, and a valuable asset when it's time to resell. Consider the potential of your space – what is your dream front yard or backyard?



INCREASE YOUR HOME'S VALUE

With the rise in the popularity of outdoor living, the improvements and additions made to outdoor spaces generally see a high ROI. When coupled with the durability of Belgard pavers and wall products, which are backed by our lifetime limited transferable warranty, you're ensuring that your investment will stand the test of time.

COMPLEMENT YOUR HOME

With Belgard Rooms, you can create a picture-perfect outdoor space for you and your family, while complementing your sense of style and the architecture of your home. As the leader in outdoor living design, we provide access to the latest trends in format, shape, color and texture.



BRING THE INDOORS OUT


Craft a space that complements your daily life, encouraging more time spent outside. Whether it's a fire pit patio, pool deck, front porch or an outdoor living room and kitchen, a functional space works for both relaxation and entertaining. Technology, including heating and lighting, can help meet all your family's needs.

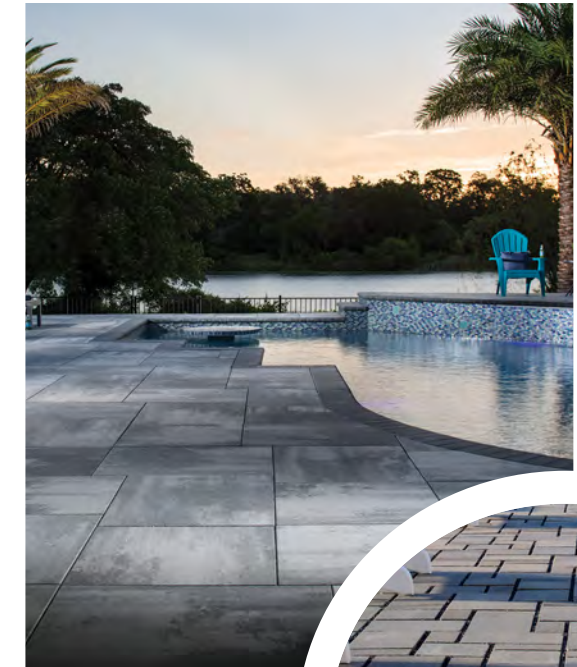
OUTDOOR OASIS

Determine which space will benefit your family the most – front porch or backyard – and develop your personal oasis. A well-designed outdoor space should encourage exercise, meditation and work to recharge yourself and your family.

Discover your ideal outdoor space:
Belgard.com/Rooms




HERITAGE COLLECTION 
Antiqued. Tumbled.



METROPOLITAN COLLECTION 
Smooth Finish.
Straight Lines.

ARTISAN COLLECTION 
Unique and Contemporary.

ENVIRONMENTAL COLLECTION 
Permeable Pavers.


NATURAL COLLECTION 
Slate and Worn Stone. Sculpted.

6 UNIQUE LOOKS to fit any **STYLE**

COLLECTIONS BY BELGARD®

Choose multiple elements from within a single collection for a more uniform look or mix and match for a bold look that's uniquely you.

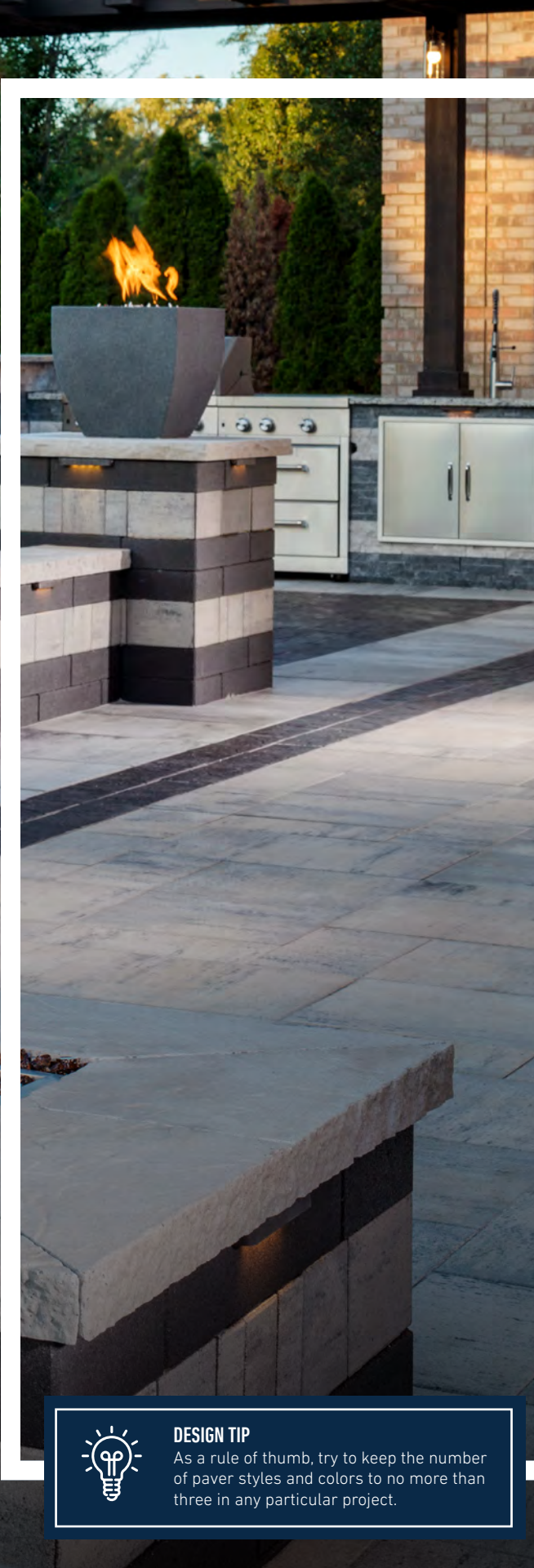
Belgard.com/Collections

PORCELAIN COLLECTION 
Porcelain Products.



Make it
YOUR SPACE

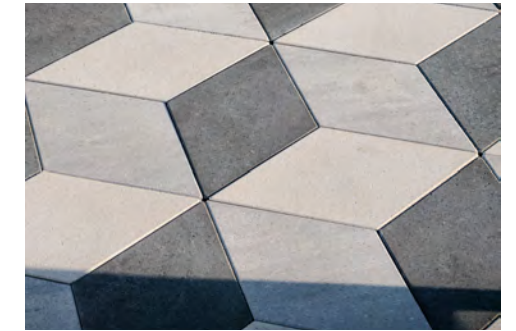
With modular pavers, you'll experience ultimate design flexibility that allows for endless possibilities to satisfy even the most creative of designs. Sized to integrate seamlessly with one another, these modular systems are designed to create any space that you can dream up.



THIS *or* THAT



SUBTLE CONTRAST Use a monotone color scheme with perpendicular borders.



BOLD CONTRAST Different colors, shapes, and sizes make for eye-catching designs.



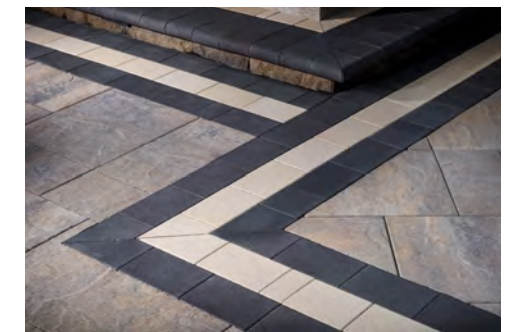
WORK WITH NATURE Follow the landscape and allow for nature to guide you.



MAKE NATURE WORK WITH YOU Decide where you want the natural world to break through.



GO SMOOTH Pick a smooth texture for a modern aesthetic and use color to create contrast.

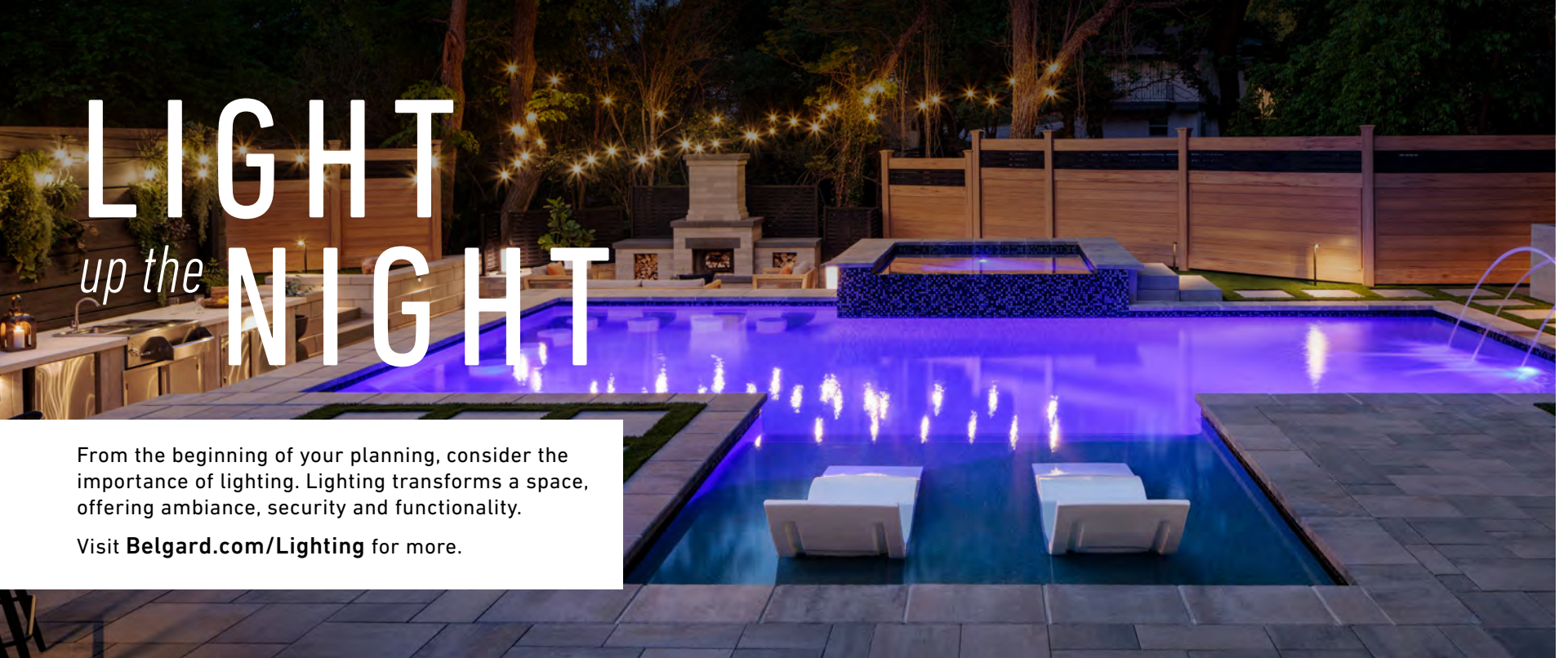


MIX IT UP Add visual and tactile interest by mixing textures and colors.



DESIGN TIP

As a rule of thumb, try to keep the number of paver styles and colors to no more than three in any particular project.

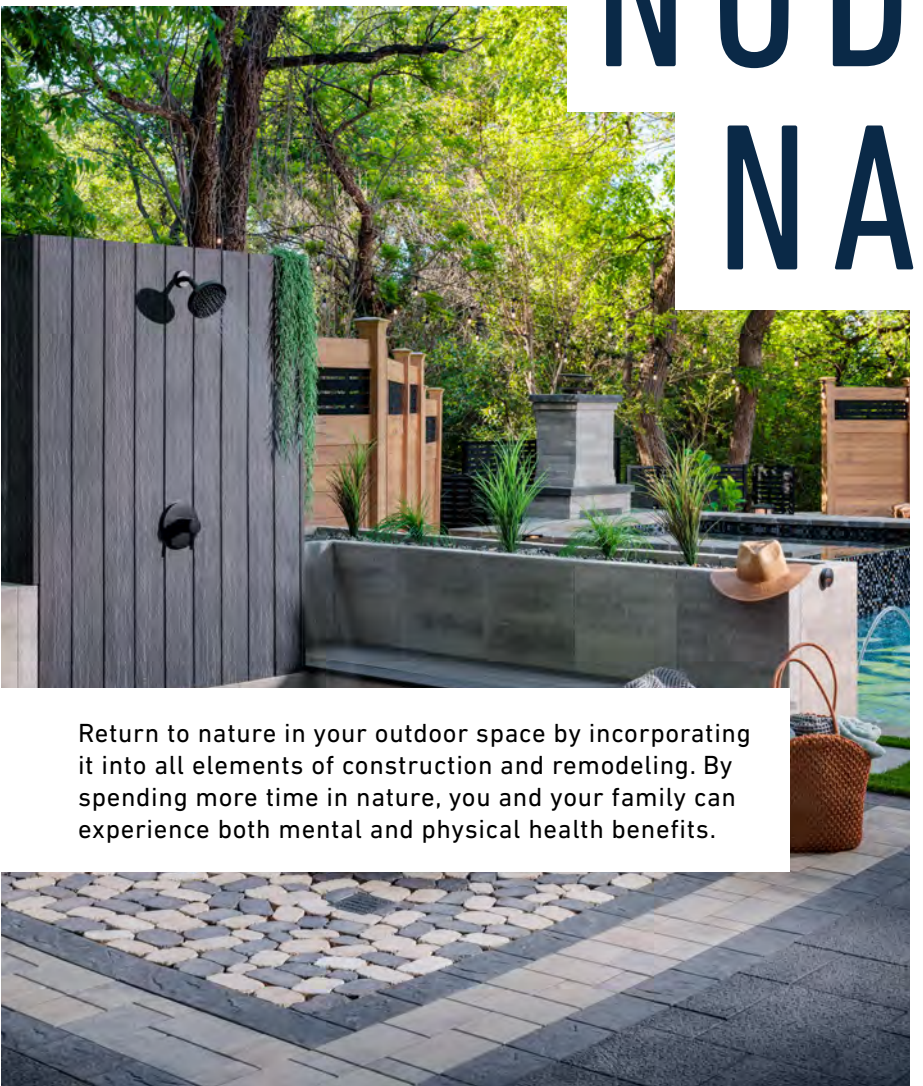
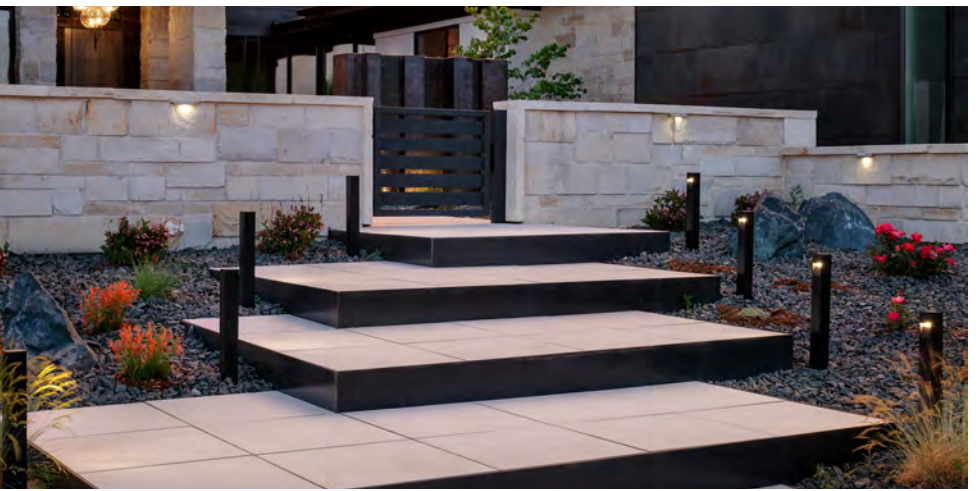


LIGHT *up the* NIGHT

From the beginning of your planning, consider the importance of lighting. Lighting transforms a space, offering ambiance, security and functionality. Visit Belgard.com/Lighting for more.



NOD *to* NATURE



Return to nature in your outdoor space by incorporating it into all elements of construction and remodeling. By spending more time in nature, you and your family can experience both mental and physical health benefits.



GO VERTICAL

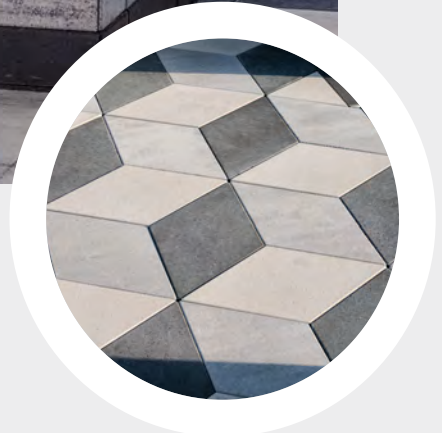
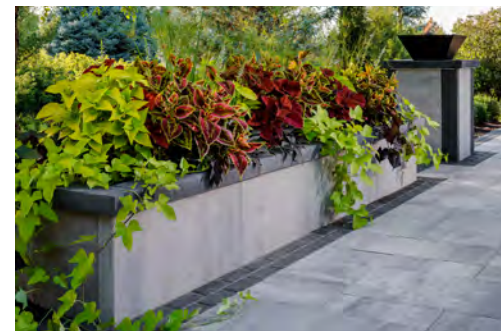
Customize and define your space with Artforms™, a revolutionary system that utilizes a large-format modular panel system. From seating and bars to water or fire features and vertical gardens, the possibilities are endless in your outdoor space.

Functionality and aesthetics in one landscape

Sleek, modern and beautiful



SEE WHAT'S POSSIBLE AT Belgard.com/Artforms OR CHECK OUT OUR ARTFORMS IDEA BOOK.



Every outdoor space is unique, which is why we designed our modular line of pavers to provide complete design flexibility. With our modular pavers available in a variety of textures and sizes, there's no limit to the ways you can design your space. Sized in true inch increments, each of our modular pavers is made to fit alongside its counterparts to streamline the installation process.

VERSATILE LANDSCAPING

RELIVE the DREAM

Feel inspired by the idyllic retreats of HGTV® Dream Home

9 YEARS OF INSPIRING OUTDOOR LIVING DREAMS TOGETHER

Our long-term sponsorship of the HGTV® Dream Home means collaborating with top design professionals to create trend-forward outdoor spaces that inspire millions of homeowners.



2016
MERRITT ISLAND, FLORIDA

This **WATERFRONT RETREAT** showcased one continuous and flowing contemporary design, mimicking the natural tones of the surrounding waterfront property.



2017
ST. SIMONS ISLAND, GEORGIA

This **MODERN SOUTHERN FARMHOUSE** took advantage of the dramatic lakefront views through a cohesive design throughout the exterior and interior of the home.



2018
GIG HARBOR, WASHINGTON

This **CONTEMPORARY MARITIME HAVEN** took inspiration from the stunning coastal location on Puget Sound to create a year-round outdoor living space for the entire family.



2019
WHITEFISH, MONTANA

This **MODERN MOUNTAIN HIDEAWAY** featured seamless transitions between the indoor and outdoor spaces to enhance the dramatic view.



2020
HILTON HEAD ISLAND, SOUTH CAROLINA

This **COASTAL LOW COUNTRY RETREAT** embraced the marsh-front backdrop by weaving organic elements and textures throughout the entire space.



2021
NEWPORT, RHODE ISLAND

This **CLASSIC WATERFRONT ESCAPE** provided nautical-inspired spaces, mixing organic textures in the outdoor entertaining areas for a fresh and natural feel.



**HGTV
DREAM
HOME
2022
PROUD SPONSOR**



2022
WARREN, VERMONT
This **CONTEMPORARY MOUNTAINTOP CHALET** is a modern twist on the classic ski lodge design – with entertainment zones perfect for enjoying all four seasons.



**HGTV
DREAM
HOME
2023
PROUD SPONSOR**



2023
MORRISON, COLORADO
This **MOUNTAINSIDE WOODLAND RETREAT** lives in harmony with the natural surroundings, featuring outdoor spaces seemingly carved into the Colorado mountainside.



**HGTV
DREAM
HOME
2024
PROUD SPONSOR**



2024
ANASTASIA ISLAND, FLORIDA
This **SEASIDE ESCAPE** nestled along the northern edge of the Florida coastline features an expansive outdoor entertaining space with pool deck, fire feature, and courtyard.

Your dream space
NOW A REALITY.

Time to plan
WHAT'S NEXT.

Whether installing one outdoor room at a time or simply adding onto an existing outdoor living area, our Augmented Reality tool helps you visualize your future space. Simply load your favorite AR Room onto your mobile device and project it onto your actual yard. Physically walk through the design and get a realistic vision of how you would live in that space.



try it



BELGARD
ROOMS

SELECT *your* CONTRACTOR



Selecting the right contractor is an important decision. It's critical to build a relationship and work together as a team to create your ideal outdoor living space. The below checklist is a great starting point to determine if a contractor is the ideal fit for your project.

CHECKLIST FOR CONTRACTOR:

- QUALIFICATIONS AND EXPERIENCE**
Inquire about services, years of experience, specialized certifications and training from industry organizations, such as ICPI, NCMA, SRW and more.
- PROOF OF INSURANCE AND BUSINESS LICENSE**
Confirm the contractor can provide proof of insurance and that the business is approved with the state and/or local municipality. This includes determining if any damages to the landscape are covered or if you will need to handle.
- CUSTOMER REFERENCES**
Ask to see photos of past projects and any testimonials from former customers.
- SUBCONTRACTED SERVICES**
Determine if services outside of hardscapes, including landscaping, plumbing, irrigation and lighting are needed. Will they handle this, or do you need to?
- PAYMENT TERMS AND TURNAROUND**
Get a complete understanding of financing options and payment terms, as well as the estimated project start and completion dates.
- SEALANTS AND MAINTENANCE**
Ask if the contractor offers a program to clean and reseal pavers, ideally done every 3 to 5 years.
- WORKMANSHIP GUARANTEE**
Determine if the contractor is willing to guarantee workmanship for a year after installation.
- ACCESS NEEDS**
Determine if there are access requirements, including any details that should be communicated to a neighbor, HOA or local municipality.

*All Belgard Authorized Contractors are required to have at least one team member who is ICPI certified, meaning properly trained and certified by the Interlocking Concrete Paver Institute. The team member must meet annual requirements to maintain the company's "authorized" status.

To find a Belgard Authorized Contractor or Dealer visit [Belgard.com/Locator](https://www.belgard.com/Locator)



VISUALIZE *your* PROJECT

Before breaking ground, it's important to see a design sketch, so you and the contractor are on the same page. If your contractor is a Belgard Authorized Contractor, they have exclusive access to **Belgard Design Studio**, which shows outdoor designs in photorealistic 3D images and gives you an idea of how your space will look.

Belgard Design Studio transforms photos of your space and a design sketch from your contractor into realistic imagery of your future outdoor living space, taking into account existing structures and landscaping, as well as future furniture placement and lighting.

To see samples of existing 3D designs, visit: [Belgard.com/BDS](https://www.belgard.com/BDS)



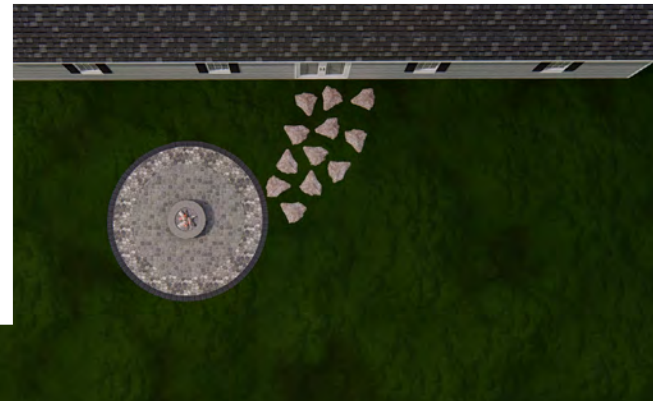
TO PHASE

or not TO PHASE

Sometimes, it's not feasible to install your entire dream outdoor living space at once. If you need to install your project in phases over a period of months or years, **discuss a phased plan with your contractor that makes the most sense** from a cost and lifestyle perspective.

Make sure to develop construction plans for those future improvements upfront. That way, you can install footings or utility lines that may be needed later. This includes thinking about gas, lighting and future water features.

You can also consider financing options. By choosing a **Belgard Authorized Contractor**, you also have access to **Belgard Financing**, which may allow you to take advantage of construction efficiencies and avoid having to build in phases.



PHASE ONE



PHASE TWO



PHASE THREE

BUDGET TIPS

1. Determine a **payment schedule** and if materials are included. Plan the project in phases to meet your budget.
2. **Research** typical project costs in your area. Ask neighbors if they have done similar projects.
3. Get **multiple quotes** from several contractors.
4. **Determine product costs** online. Look for alternative products that are similar in price for more options.
5. Complex projects cost more. Understand specific **construction or engineering requirements**.
6. Linear design and modular design both require less cutting and can be more **cost effective** and less labor intensive.
7. **Leveling your land can be costly**, so consider building a retaining wall that "steps up" the slope to create more usable space and enhance the look and feel of your yard.



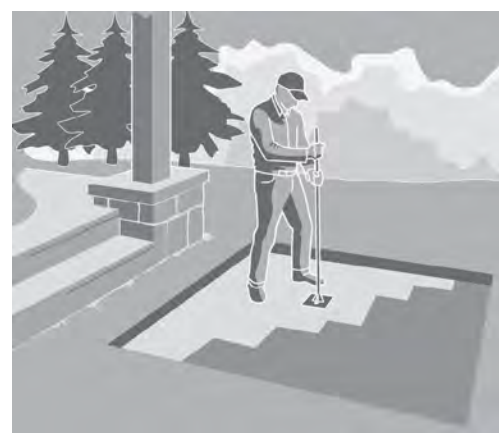
PROJECT INSTALLATION

We won't sugar coat it – hardscapes installations can be messy work. While your contractor is meticulously working through the installation to deliver a beautiful outdoor space, there are a few things you should keep in mind...

- ▶ **COMMUNICATE WITH YOUR CONTRACTOR:**
Understand the timeline and what potential roadblocks may come up during the process.
- ▶ **TIMING IS EVERYTHING:**
Consider the weather in your city and discuss the ideal timing for installation with your contractor. The more time to plan, the better.
- ▶ **HARDSCAPES PROJECTS TAKE TIME:**
The installation is a multi-step process, including excavation and installing layers of aggregate, bedding sand, hardscapes and jointing material. Contractors aim to deliver projects in a timely manner, but each step is important to deliver a quality, final product.
- ▶ **IN-PROGRESS PHOTOS WON'T BE PRETTY:**
We love a before and after comparison, but remember that it takes time to get from one to the other.
- ▶ **THERE MAY BE MUD:**
During the installation, there may be uneven grounds, dirt and mud. But don't fret. Contractors are working quickly to create a gorgeous space, and all the mess will be a distant memory.



STEP 1: DETERMINE THE DEPTH AND AREA OF TOTAL EXCAVATION AND EXCAVATING



STEP 2: EXCAVATE, FLATTEN, AND COMPACT BASE AT APPROXIMATE 5" DEPTH



STEP 3: LAY GEOTEXTILE



STEP 4: ADD BEDDING SAND



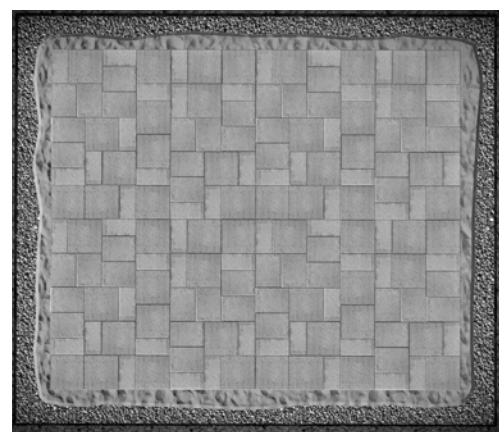
STEP 5: INSTALL EZ BASE PANELS



STEP 6: INSTALL PAVERS



STEP 7: INSTALL EDGE RESTRAINTS



STEP 8: INSTALL TECHNISEAL JOINTING SAND



STEP 9: ENJOY!

AFTER INSTALLATION

Installation is complete! Now, there are a few tips to follow to finalize your project.

- ▶ **Schedule a final walk-through with your contractor** to make sure you're satisfied with the work.
- ▶ **Discuss options for cleaning and sealing the pavers.** Generally, it's recommended to wait about 90 days before applying a cleaner on new pavers or concrete.
- ▶ Occasionally, a white haze called "efflorescence" may appear on the surface of the pavers a few weeks or months after they've been produced. This is caused by migrating salt within the concrete and is a **natural condition that may occur** in all cement based products. It doesn't affect the materials' integrity and will typically correct itself with time and exposure to elements.
- ▶ If you intend to seal your pavers and there is some efflorescence visible, **apply a cleaner first** to ensure the efflorescence doesn't become trapped beneath the sealer.
- ▶ Before sealing, **prep the surface** by removing dirt, stains and debris and then let the surface dry.
- ▶ **Apply sealers the day after** the pavers have been cleaned. After applying, let the surface cure for 24 – 72 hours.

Learn more about Techniseal's premium quality cleaners and sealers at:
[Techniseal.com/Pavercare](https://www.techniseal.com/Pavercare).



PROTECTING *your* INVESTMENT

Belgard's manufacturing processes are world-class, using only quality materials to produce hardscapes that resist breaking and fading and will provide lasting beauty for your home. We proudly stand behind our products with a lifetime transferable limited warranty. You can relax knowing that once your Belgard® hardscape is installed by an authorized contractor, it's warrantied for as long as you own your home. The warranty can also be a transferable asset when you sell your home.

Visit **[Belgard.com/Warranty](https://www.belgard.com/Warranty)**.

LONG TERM CARE & MAINTENANCE

GENERAL MAINTENANCE

- ▶ Clean pavers each spring with a coarse-bristle "stable" broom and paver cleaner.
- ▶ Apply granular weed preventative between joints.
- ▶ Be careful cleaning pavers with power washers. The force of the spray can mark the surface or compromise jointing sand.

CLEANING

- ▶ Always test a small, inconspicuous area first before applying any paver cleaning solution.
- ▶ Read and follow the directions printed on container labels for cleaning solution use, application, precautions and first aid. Always rinse the solution off thoroughly after use.
- ▶ In the event of an oil spill, act to remove promptly with granular oil absorbent. Spills should be soaked up, not rubbed.

PROTECTING

- ▶ When used in proper amounts, de-icing substances shouldn't damage pavers; however, they may accelerate surface wear on some styles. Use in moderation.
- ▶ Apply up to two coats of sealer as directed on the label after your pavers are installed. Two years after installation, test to see if an additional application is needed.
- ▶ If the joints between paving stones appear to be chipping, the polymeric sand should be removed and replaced. Polymeric sand should be fully activated through the entire joint to cure properly and maximize hold.



Techniseal®

Installers and homeowners everywhere trust the effectiveness and durability of Techniseal® products to keep their hardscapes as beautiful as they envisioned. From high-performing sand in a variety of colors to superior cleaning solutions and sealers, Techniseal offers solutions to maximize the life of concrete pavers.

LEADERS *in* OUTDOOR LIVING

Belgard is part of Oldcastle APG, a CRH Company, and North America's leading manufacturer of concrete building and hardscape products. Pavers, patio slabs, stone veneer, retaining walls, composite decking, dry mix concrete, fertilizers, mulches, pool finishes and fencing are just a few categories where Oldcastle APG leads the marketplace.

When you are designing your outdoor space, ask your contractor if our other Oldcastle brands make sense for your project.

OLDCASTLEAPG.COM



Belgard® hardscape products include permeable pavers, interlocking concrete pavers, porcelain pavers, freestanding & retaining walls, fire pits, outdoor ovens and fireplaces.

BELGARD.COM



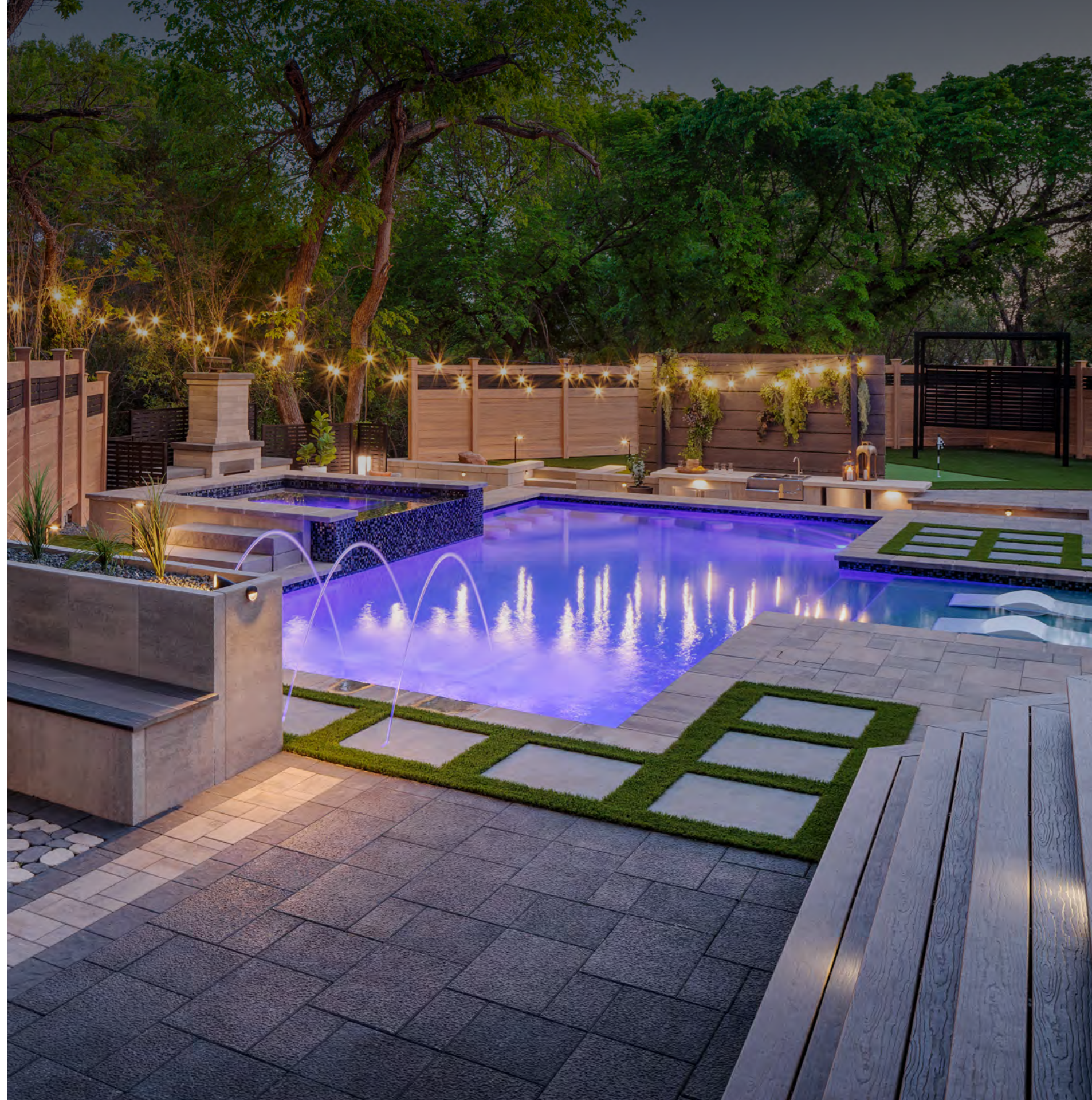
Sakrete® is the pro's choice for concrete, mortar and stucco mixes, and repair and maintenance products. Contractors and do-it-yourselfers rely on the quality, consistency and proven performance of Sakrete products.

SAKRETE.COM



Techniseal® has been a world leader for over 30 years in the field of polymeric jointing sand and a renowned manufacturer of products for the cleaning and protection of concrete pavers.

TECHNISEAL.COM



Echelon Masonry™ is North America's largest manufacturer of the highest-quality masonry products for the architectural and masonry industries, offering the widest masonry portfolio in the industry.

ECHELONMASONRY.COM



MoistureShield® composite decking products outperform and outclass your run-of-the-mill composite, maintenance-heavy wood or plastic-like PVC decks.

MOISTURESHIELD.COM



Barrette® provides a diverse and flexible range of products ingeniously designed and meticulously engineered to hold up to family, life and nature — beautifully transforming any outdoor space.

BARRETTEOUTDOORLIVING.COM



PebbleTec® offers the world's most trusted pool finishes, as well as Lightstreams Glass Tile, Artisan Fire & Water features and much more.

PEBBLETEC.COM



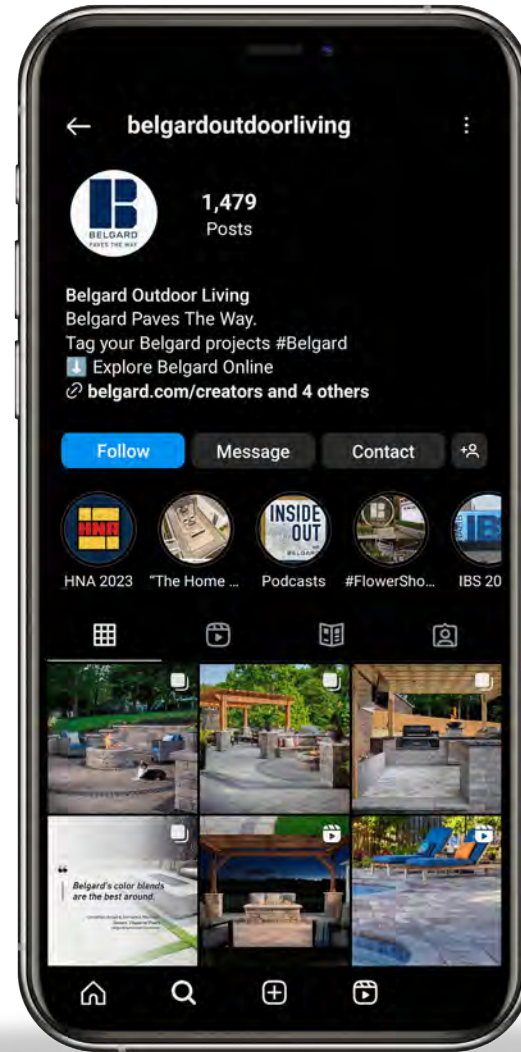
Lawn & Garden

Oldcastle APG's suite of lawn and garden brands include mulch, soil, decorative stone edging, landscape lighting and more, all with the aim to create and maintain healthy, integrated outdoor spaces.

OLDCASTLEAPG.COM

SHARE *your* BELGARD PROJECT ON SOCIAL MEDIA

We know you'll be proud of your new outdoor living space, so why don't you share it with us? Take Before and After pictures of the project and connect with us on one of our social media channels.



CONNECT WITH US

 @BelgardOutdoorLiving

 Pinterest.com/Belgard

 @BelgardOutdoorLiving

 Belgard.com/Blog

 @BelgardOutdoorLiving



400 Perimeter Center Terrace
Suite 1000
Atlanta, Georgia 30346
877-235-4273